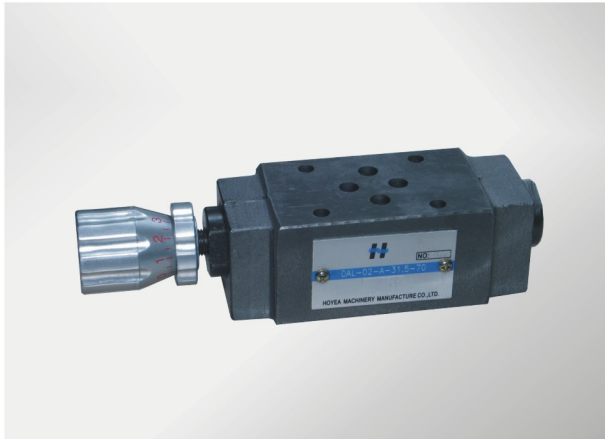


Modular restrictive check valve

Technical specification



Specification	02	03
Max.pressure (MPa)	31.5	
Max.flow (L/min)	30	50
Hydraulic fluid	Mineral oil;phosphate-ester	
Fluid temp (°C)	-20~70	
Viscosity (mm ² /s)	2.8~380	
Opening pressure (MPa)	a: 0.05	
Cleanliness	The maximum allowable cleanliness of the oil should be according to 9th degree of Standard NAS1638.It is suggested that the minimum filter rating should be $\beta_{10} \geq 75$.	

C.8.1

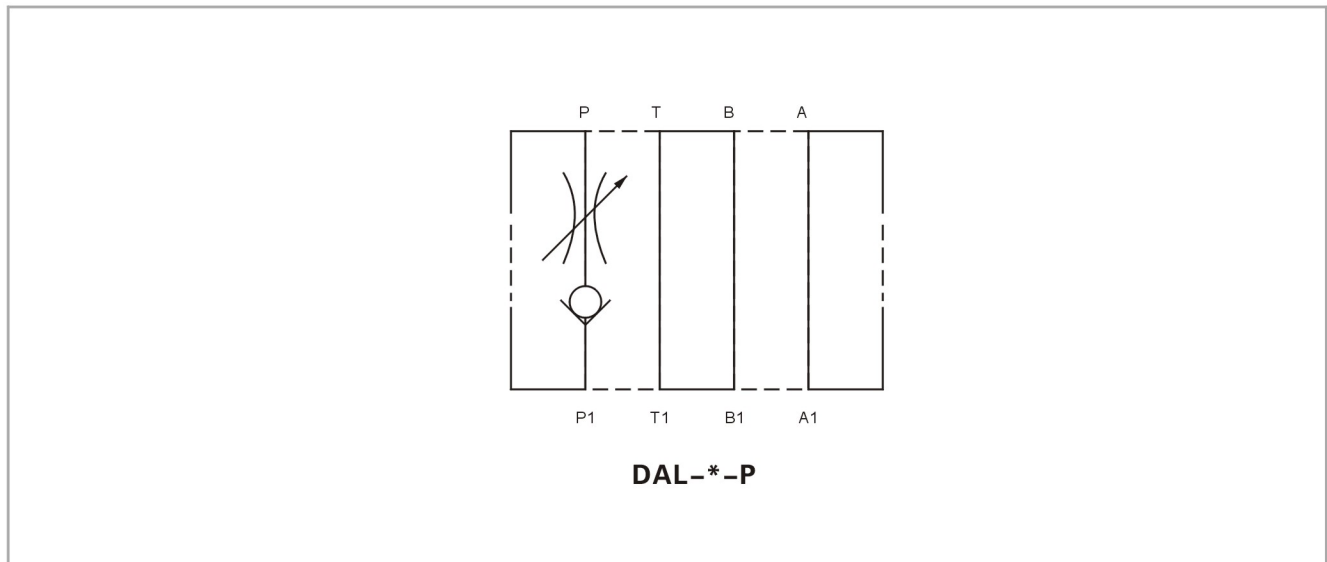
Model instruction

DAL - * * - * / * 70 *

<p>Modular restrictive check valve</p> <p>Specification 02 NS 6 03 NS 10</p> <p>P P Pipeline</p> <p>Opening pressure a 0.05MPa</p>	<p>Remarks</p> <p>Serial number</p> <p>Seal material Omit NBR Seals V FPM Seals</p>
------------------------------------------------------------------------------------------------------------------------------------------------	---------------------------------------------------------------------------------------------

Notice: only P pipeline available

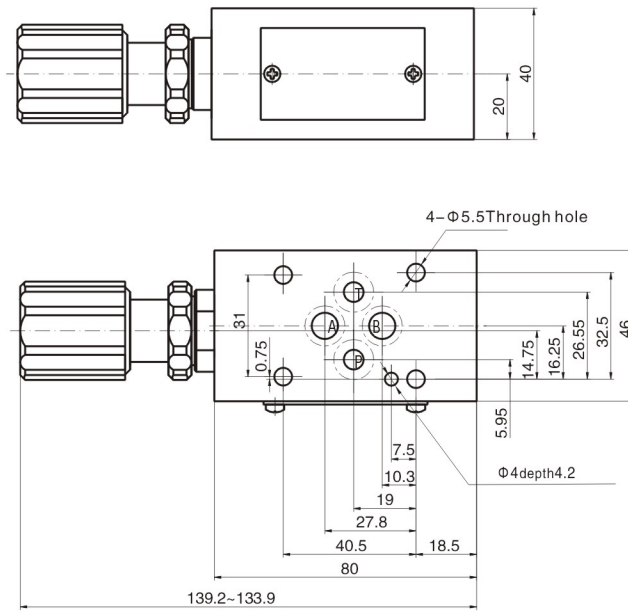
Code symbol



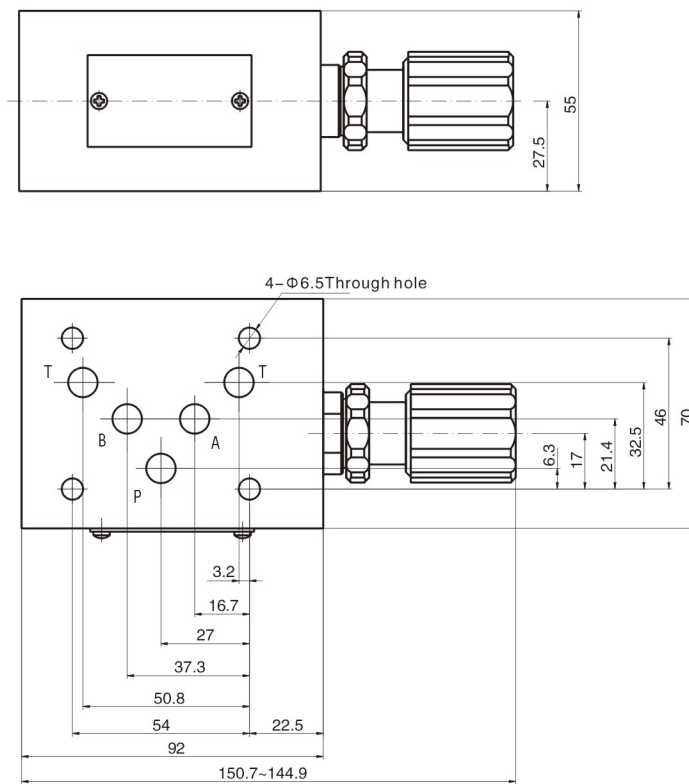
Modular restrictive check valve

External dimensions

DAL-02-P ...



DAL-03-P ...



Notice: The surface, connecting with the valve, should be Ra0.8 roughness, and 0.01/100mm flatness.